



KDE PLASMA 6

NEAL GOMPA

Chair, Fedora KDE SIG

- ✉ ngompa@fedoraproject.org
- ✉ Conan_Kudo@fosstodon.org
- [m] [@conan_kudo:matrix.org](matrix://@conan_kudo:matrix.org)

WHO AM I?

- Open Source Advocate
- Contributor and package maintainer in Fedora and CentOS
- Member of Fedora Engineering Steering Committee (FESCo)
- Chair of Fedora Asahi and KDE SIGs
- Member of Fedora Workstation, Fedora Cloud, and Fedora Server WGs
- Co-chair of CentOS Hyperscale SIG
- Member of CentOS Alternative Images SIG
- Member of AlmaLinux OS Foundation
- Member of AlmaLinux Engineering Steering Committee (ALESCo)
- Member of the openSUSE Board
- Member of KDE, e.V.
- Member of X.Org Foundation
- Member of X.Org Foundation Board of Directors
- Co-host of the [Sudo Show](#) podcast
- Principal Consultant at [Velocity Limitless](#)

NEAL GOMPA

✉ ngompa@fedoraproject.org



FEDORA KDE

Fedora KDE SIG

The Special Interest Group (SIG) packages and maintains the Qt stack and KDE software ecosystem for Fedora (and RHEL, starting with RHEL 8).

We develop and maintain variants of Fedora media with KDE software on it.

Also... fedoraloveskde.org



Fedora logo trademarked by Red Hat, Inc. in the United States and other countries.

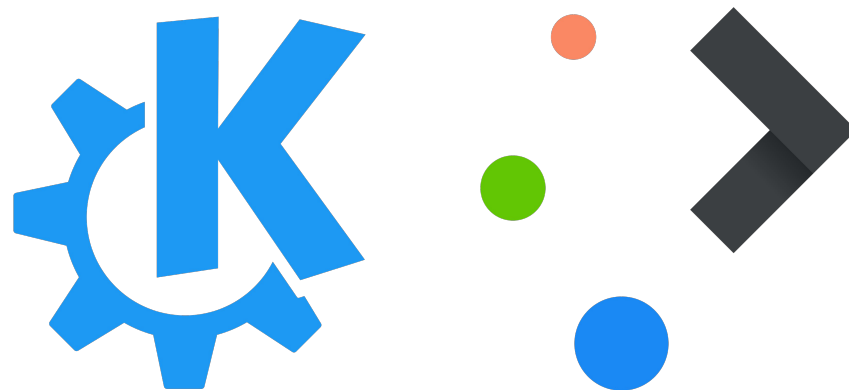
KDE and the K Desktop Environment logo are registered trademarks of KDE, e.V.

KDE PLASMA

Simple. Powerful. Flexible.

KDE Plasma is a modern, feature-rich desktop environment for Linux-based operating systems. Known for its sleek design, customizable interface, and extensive set of applications, it is also open source, devoid of ads, and makes protecting your privacy and personal data a priority.

KDE Plasma is built on top of the KDE Frameworks and Qt.



KDE, the K Desktop Environment logo, and the KDE Plasma logo are registered trademarks of KDE, e.V.

NEAL GOMPA

✉ ngompa@fedoraproject.org



SO WHAT'S NEW?



KDE PLASMA 6

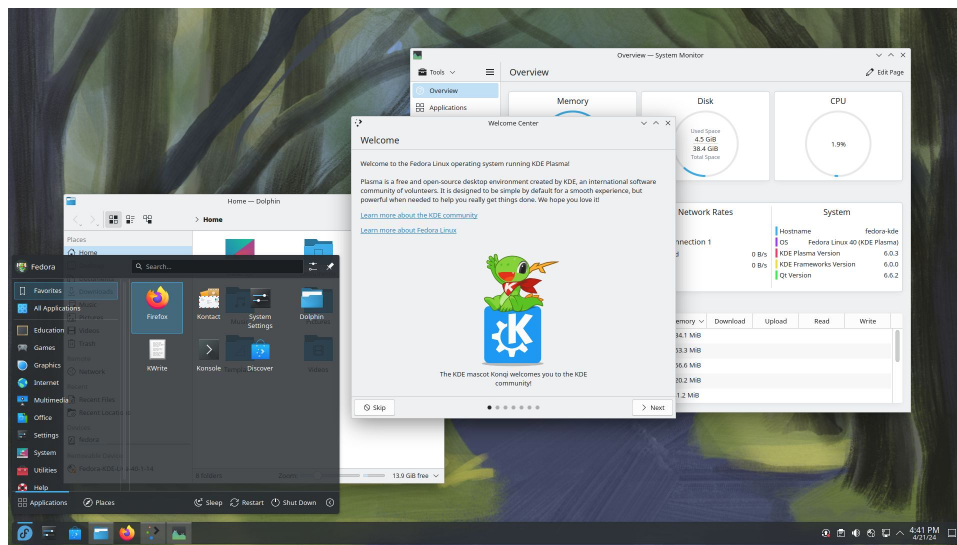
Next-gen awesomeness!

KDE Plasma 6 is the latest major version of the KDE Plasma desktop, offering a refinement of what has been available for the past decade and major improvements throughout the stack to support the future of the Linux desktop.

Among the user-visible changes are:

- Refined look and feel for a cleaner experience
- Refreshed default feature set
- More extensibility than ever before

But what about the under-the-hood changes?



Fedora logo trademarked by Red Hat, Inc. in the United States and other countries. Firefox and the Firefox logo are registered trademarks of the Mozilla Foundation in the U.S. and other countries. KDE and the K Desktop Environment logo are registered trademarks of KDE, e.V.

KDE PLASMA 6 WAYLAND

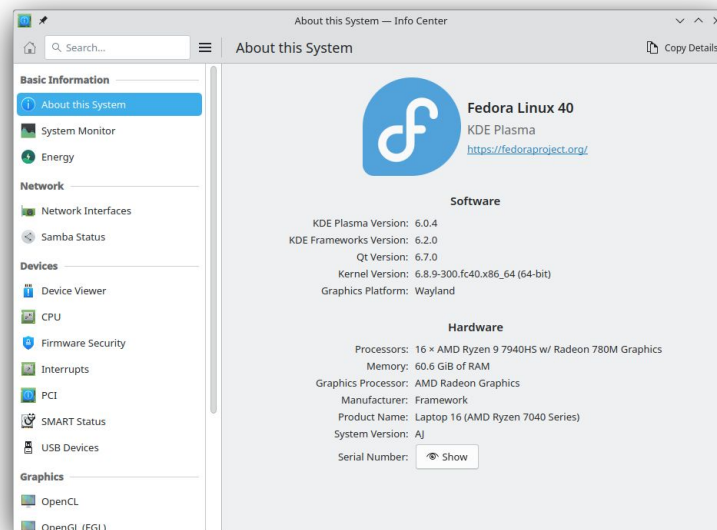
Welcome to the future...

Fedora is about working with upstreams to enable bringing features first to users. This is also balanced by the skillset of the KDE SIG and where we spend time and effort.

Plasma 6.0 was the right point to reset expectations. The Fedora KDE SIG no longer ships KDE Plasma with an X11 session with Fedora Linux 40, and this will carry over to EPEL for CentOS/RHEL 10.

This was the result of a long journey beginning with Fedora Linux 34:

- [F34 Change to use Plasma Wayland](#)
- [F35 Change to sdl12-compat for SDL applications](#)
- [F38 Change to use SDDM Wayland](#)
- [F40 Change to Wayland only KDE Plasma 6](#)



Fedora logo trademarked by Red Hat, Inc. in the United States and other countries.

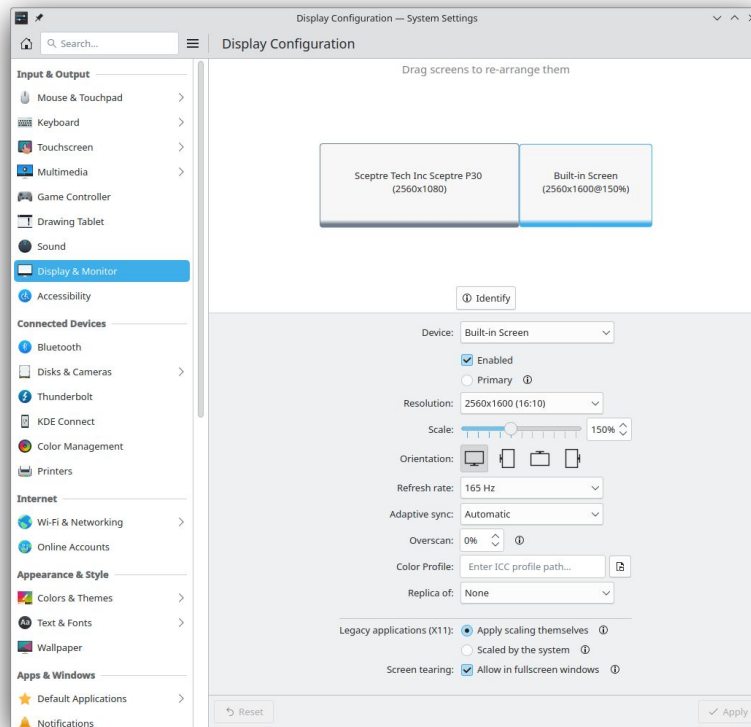
KDE PLASMA 6 WAYLAND

... with vivid color ...

KDE Plasma introduces a number of new capabilities exclusively on Wayland:

- Full support for displays with different scaling factors, including fractional scaling
- Support for applying color profiles to displays (sRGB for now, wider color gamuts coming in Plasma 6.1)
- Variable refresh rate and adaptive sync
- HDR for supported applications and modes (full screen applications, GameScope, etc.)

These capabilities make KDE Plasma the *best* desktop to take advantage of the latest and greatest display hardware.



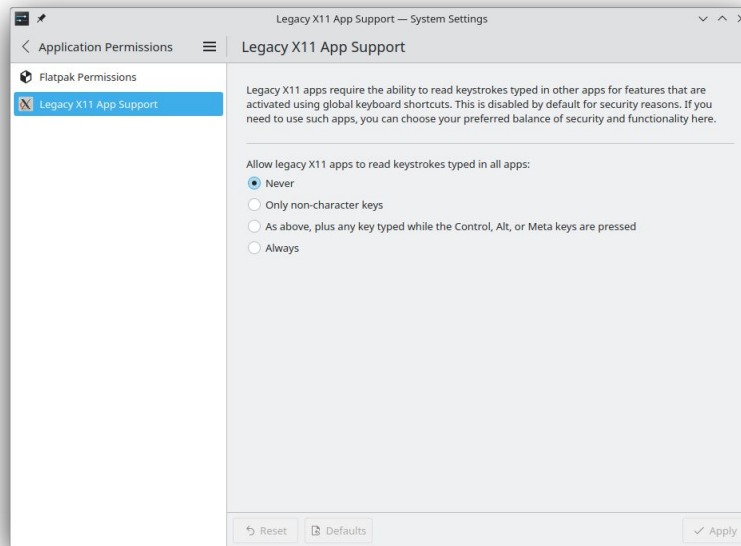
KDE PLASMA 6 WAYLAND

... and supporting the past!

KDE Plasma Wayland offers a number of enhancements to offer compatibility for legacy applications to enable a smooth transition to Wayland:

- Optional mode for allowing shortcuts to work from legacy X11 applications
- Configurable behavior for scaling legacy X11 applications for HiDPI with reasonable defaults
- Secure screen video bridge for legacy X11 applications to access the Wayland desktop with the user in full control

Naturally, native Wayland applications can leverage modern standardized APIs for global shortcuts, HiDPI rendering, and screencasting.



HOW TO GET KDE PLASMA

Fedora KDE Plasma Spin

The flagship variant from the KDE SIG, which offers a curated experience to showcase KDE technologies on the Fedora Linux platform.

kde.fedoraproject.org

Fedora Kinoite

A new variant offering a more minimal out of the box experience, which offers simple and reliable system maintenance powered by RPM-OSTree and delivers applications as Flatpaks.

kinoite.fedoraproject.org

NEAL GOMPA

✉ ngompa@fedoraproject.org



SO WHAT'S COMING SOON?



WHAT'S COMING SOON

On the bucket list...

- Fedora KDE Plasma Mobile (Fedora 41)
- Plasma 6.1 (Fedora 40+)
- Plasma 6 for CentOS/RHEL 10
- More interesting stuff coming soon... 😊

Join Us

- Project issue tracker: pagure.io/fedora-kde/SIG
- Mailing list: kde@lists.fedoraproject.org
- Matrix: [#kde:fedoraproject.org](https://matrix.to/#/kde:fedoraproject.org)

NEAL GOMPA

✉ ngompa@fedoraproject.org



QUESTIONS?

