

# REVIVAL RETROSPECTIVE: FEDORA KDE



## NEAL GOMPA

Chair, Fedora KDE SIG

- ✉ [ngompa@fedoraproject.org](mailto:ngompa@fedoraproject.org)
- ✉ [Conan\\_Kudo@fosstodon.org](mailto:Conan_Kudo@fosstodon.org)
- [m] [@conan\\_kudo:matrix.org](matrix://@conan_kudo:matrix.org)

# WHO AM I?

- Open Source Advocate
- Contributor and package maintainer in Fedora and CentOS
- Member of Fedora Engineering Steering Committee (FESCo)
- Chair of Fedora Asahi and KDE SIGs
- Member of Fedora Workstation, Fedora Cloud, and Fedora Server WGs
- Co-chair of CentOS Hyperscale SIG
- Member of CentOS Alternative Images SIG
- Member of AlmaLinux OS Foundation
- Member of AlmaLinux Engineering Steering Committee (ALESCo)
- Member of the openSUSE Board
- Member of KDE, e.V.
- Member of X.Org Foundation
- Member of X.Org Foundation Board of Directors
- Co-host of the [Sudo Show](#) podcast
- Principal Consultant at [Velocity Limitless](#)

**NEAL GOMPA**

✉ [ngompa@fedoraproject.org](mailto:ngompa@fedoraproject.org)



# FEDORA KDE

## Fedora KDE SIG

The Special Interest Group (SIG) packages and maintains the Qt stack and KDE software ecosystem for Fedora (and RHEL, starting with RHEL 8).

We develop and maintain variants of Fedora media with KDE software on it.

Also... [fedoraloveskde.org](https://fedoraloveskde.org)



*Fedora logo trademarked by Red Hat, Inc. in the United States and other countries.*

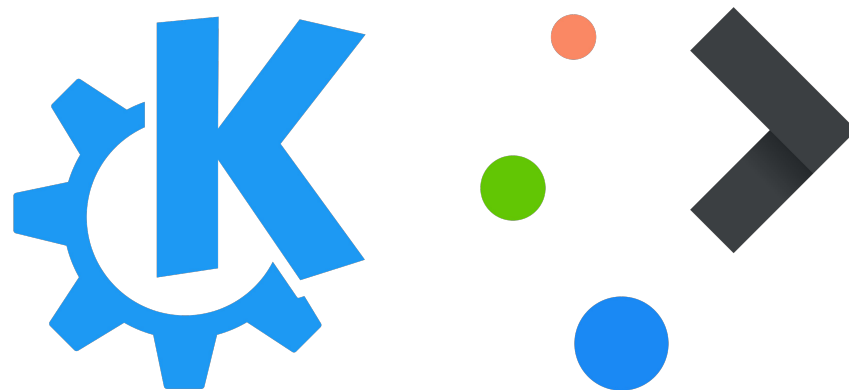
*KDE and the K Desktop Environment logo are registered trademarks of KDE, e.V.*

# KDE PLASMA

Simple. Powerful. Flexible.

KDE Plasma is a modern, feature-rich desktop environment for Linux-based operating systems. Known for its sleek design, customizable interface, and extensive set of applications, it is also open source, devoid of ads, and makes protecting your privacy and personal data a priority.

KDE Plasma is built on top of the KDE Frameworks and Qt.



*KDE, the K Desktop Environment logo, and the KDE Plasma logo are registered trademarks of KDE, e.V.*

**NEAL GOMPA**

✉ [ngompa@fedoraproject.org](mailto:ngompa@fedoraproject.org)



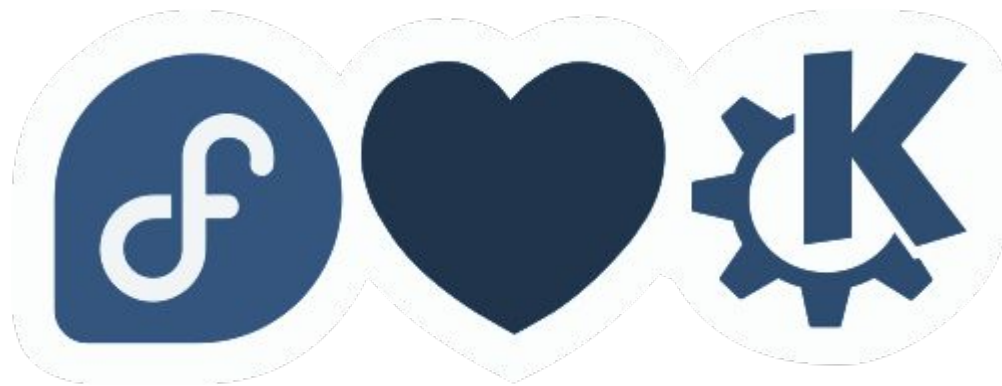
# THE BACKSTORY



# FEDORA KDE: THE BEGINNING

## Humble and driven

- Earliest incarnation: [KDE on Red Hat](#)
  - Started by Rex Dieter in 2003
- Merged into Fedora Project as the KDE SIG with the [merge of Fedora Core and Fedora Extras](#) with Fedora 7
  - KDE on Red Hat remained the integration point until Plasma 5 in 2014
- The introduction of [LiveCD technology](#) at the same time led to the first release of the [Fedora KDE Spin](#) with Fedora 7 in 2007
- [Introduced KDE 4 with Fedora 9](#) in 2008



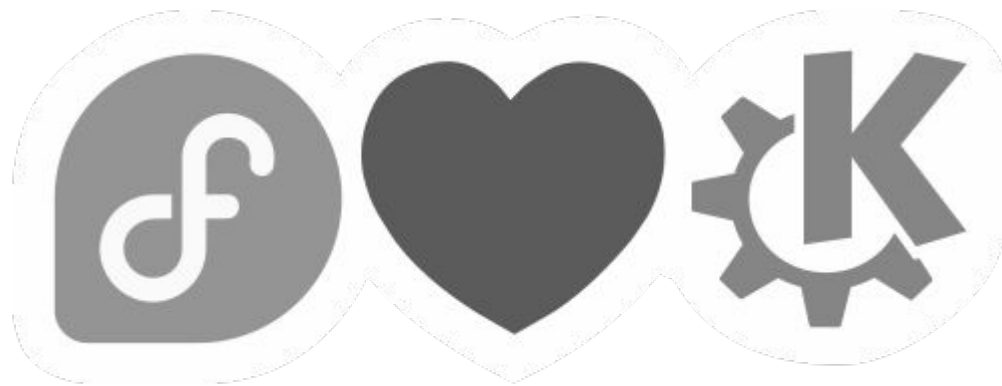
*Fedora logo trademarked by Red Hat, Inc. in the United States and other countries.*

*KDE and the K Desktop Environment logo are registered trademarks of KDE, e.V.*

# FEDORA KDE: THE PLASMA 5 YEARS

## The downturn

- [Fedora.next](#) goes into effect with Fedora 21
  - [The Workstation WG elects to only offer GNOME](#), relegating the KDE spin to a secondary site
- [Plasma 5 with Fedora 22 is introduced in 2015](#)
  - [One of the founding members of the KDE SIG quits in frustration and burnout](#) after transition to Plasma 5 is complete
- I join the SIG “officially” in 2016 😊
- New releases get packaged and shipped, but the energy and community dwindles away.



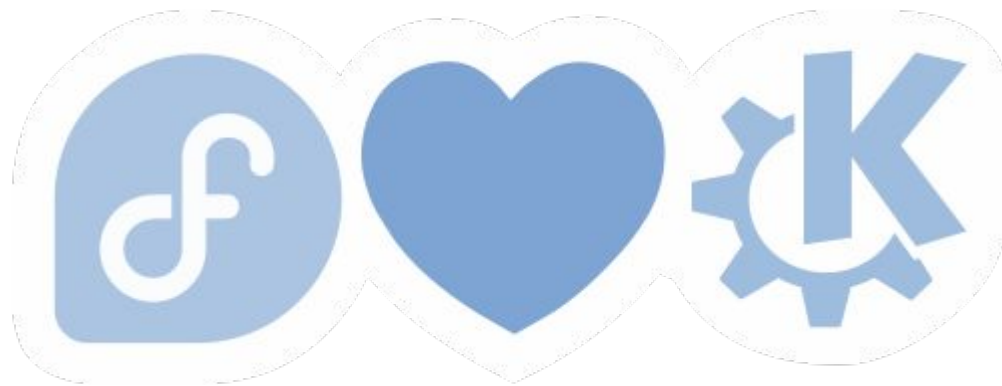
*Fedora logo trademarked by Red Hat, Inc. in the United States and other countries.*

*KDE and the K Desktop Environment logo are registered trademarks of KDE, e.V.*

# FEDORA KDE: THE REVIVAL

## Change in leadership

- After some cleanup of the Fedora KDE venues, Rex lets me lead Fedora KDE
- Governance changes to enable more active project development and maintenance, including [adopting a SIG task tracker](#) for coordination and planning.
- All SIG created tooling, scripts, and documentation are centralized and group-maintained.
- Regular meetings re-established to align SIG members on actionable work.
  - Initially IRC meetings, moved to video meetings to improve focus and productivity



*Fedora logo trademarked by Red Hat, Inc. in the United States and other countries.*

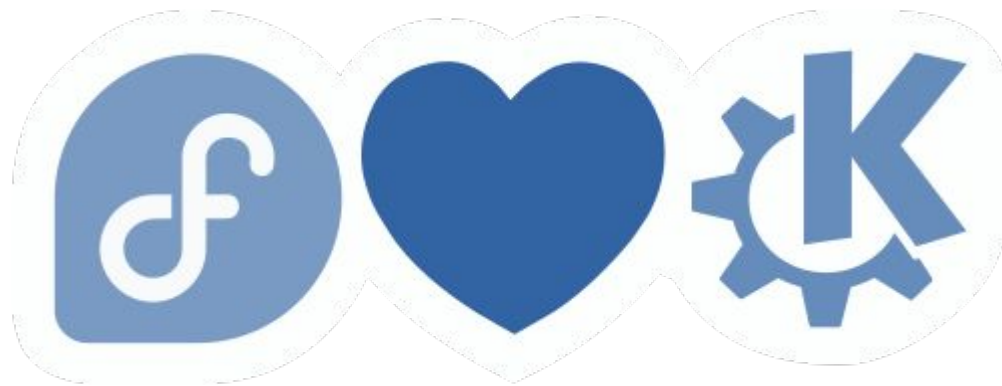
*KDE and the K Desktop Environment logo are registered trademarks of KDE, e.V.*



# FEDORA KDE: THE REVIVAL

## Change and growth

- A real roadmap was built for Fedora KDE, aiming to make Fedora KDE the best experience leveraging the latest technologies for the Linux desktop (particularly the focus toward Wayland)
  - Announced to the wider community at [Akademy 2020](#)
- The vision drives growth in contributors and a successful re-engagement with KDE upstream.
- Fedora Kinoite (as a KDE flavor Fedora Atomic variant [released with Fedora 35](#)) is [introduced at Akademy 2021](#).
- Fedora sponsors Akademy 2021 and 2022 😊



*Fedora logo trademarked by Red Hat, Inc. in the United States and other countries.*

*KDE and the K Desktop Environment logo are registered trademarks of KDE, e.V.*

# STATE OF TODAY



# FEDORA KDE: NOW

## Premier KDE for everyone

- Strong passionate group of developers and maintainers (14 core members, ~10 contributing members)
- KDE Plasma offered on all architectures
  - Priority support for x86\_64 and AArch64
- Engaged with other communities to collaborate and enable KDE-based experiences
  - Fedora Asahi
  - Fedora Cloud
  - Fedora EPEL
  - Fedora Scientific
  - CentOS Hyperscale



*Fedora logo trademarked by Red Hat, Inc. in the United States and other countries.*

*KDE and the K Desktop Environment logo are registered trademarks of KDE, e.V.*

# KDE PLASMA 6

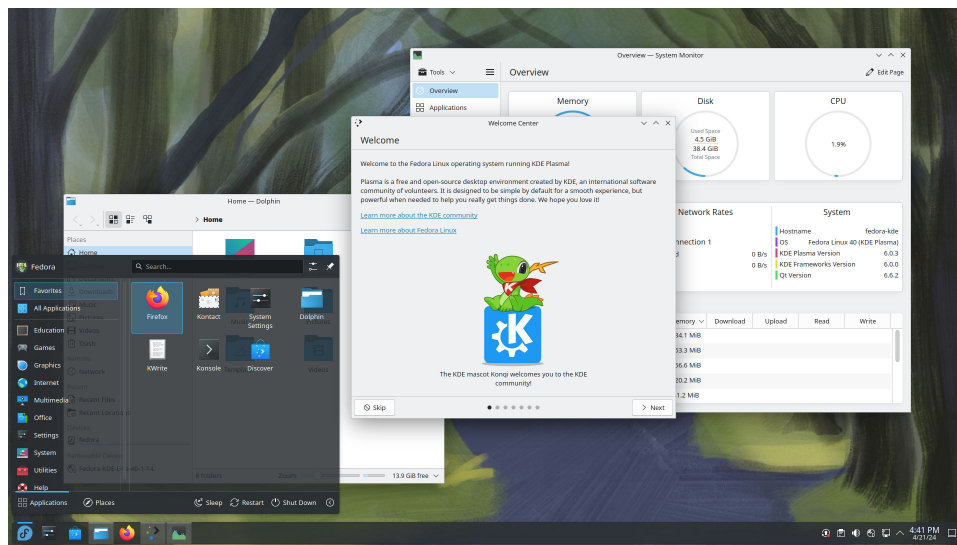
## Next-gen awesomeness!

KDE Plasma 6 is the latest major version of the KDE Plasma desktop, offering a refinement of what has been available for the past decade and major improvements throughout the stack to support the future of the Linux desktop.

Among the user-visible changes are:

- Refined look and feel for a cleaner experience
- Refreshed default feature set
- More extensibility than ever before

More details on [Fedora Magazine](https://www.fedoramagazine.org).



*Fedora logo trademarked by Red Hat, Inc. in the United States and other countries. Firefox and the Firefox logo are registered trademarks of the Mozilla Foundation in the U.S. and other countries. KDE and the K Desktop Environment logo are registered trademarks of KDE, e.V.*

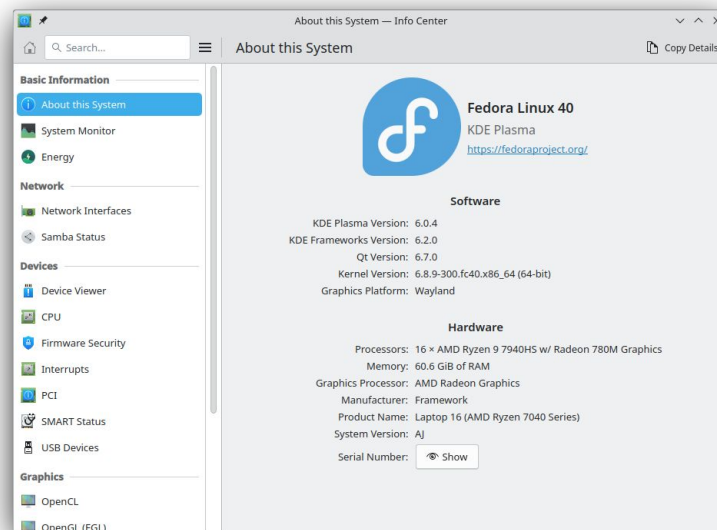
# KDE PLASMA 6 WAYLAND

Welcome to the future...

Plasma 6.0 was the right point to reset expectations. The Fedora KDE SIG no longer ships KDE Plasma with an X11 session with Fedora Linux 40, and this will carry over to EPEL for CentOS/RHEL 10.

This was the result of a long journey beginning with Fedora Linux 34:

- [F34 Change to use Plasma Wayland](#)
- [F35 Change to sdl2-compat for SDL1 applications](#)
- [F38 Change to use SDDM Wayland](#)
- [F40 Change to Wayland only KDE Plasma 6](#)



*Fedora logo trademarked by Red Hat, Inc. in the United States and other countries.*

**SO WHAT'S THE SECRET?**



# THE SECRET TO SUCCESS

## Embrace and support

- Once we had an agreed upon vision and roadmap, people were energized to engage.
- Whenever an idea comes from someone, do not dismiss out of hand and thoughtfully work through it. Make rejection require a high bar.
- Being their advocate and protecting them from the “haters” promotes healthier communities.
- Push people to shoot for the moon!

## Join Us

- Project issue tracker: [pagure.io/fedora-kde/SIG](https://pagure.io/fedora-kde/SIG)
- Mailing list: [kde@lists.fedoraproject.org](mailto:kde@lists.fedoraproject.org)
- Matrix: [#kde:fedoraproject.org](https://matrix.fedoraproject.org/#kde:fedoraproject.org)

**NEAL GOMPA**

✉ [ngompa@fedoraproject.org](mailto:ngompa@fedoraproject.org)



**QUESTIONS?**

